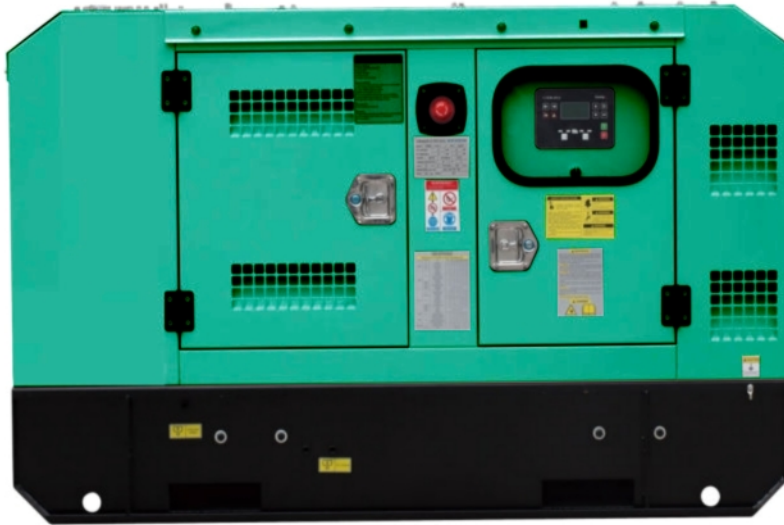


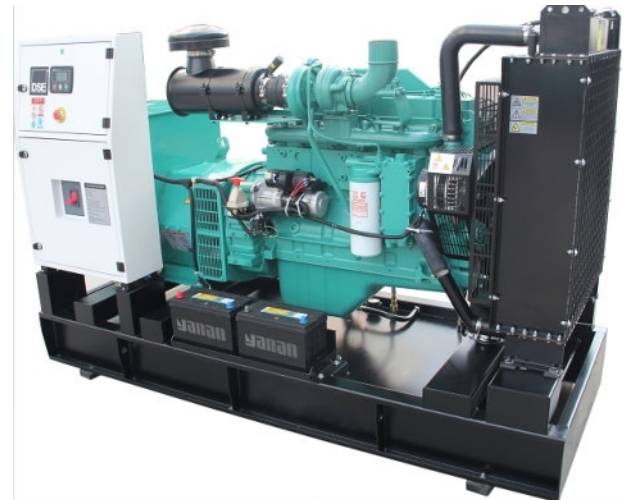
DIESEL GENERATOR DATA SHEET

DIESEL GENERATOR Powered by Cummins Model:PGD143C



I . GENERAL DATA

Prime Power	kW/kVA	104	130
Standby Power	kW/kVA	114	143
Frequency	Hz/rpm	60	1800
Voltage	V	440	254
Current	A	171	
Connection	/	3P 4W/Y	
Rated Power Factor	/	0.8	
Open Type (L×W×H)	mm	2200×940×1480	
Open Type(Weight)	kg	1180	
Silent Type (L×W×H)	mm	2800×1100×1470	
Silent Type(Weight)	kg	1630	



■ Available for voltages 400/230V, 480/277V, 380/220V, 440/254V, 416/240V, 220/127V, 208/120V

■ All datas based on ISO 3046, altitude 100m (328ft), barometric pressure 100kPa (29.53inHg), air temperature 25°C (77°F), relative humidity 30%.

■ Please contact with engineer for correct generator capacity selection when the load application can't meet with the standard reference.

■ diesel generators comply with standards :ISO8528,ISO 14000,ISO3046,GB755,BS5000,VDE0530,IEC34-1

II. STANDARD CONFIGURATION

Engine	Cummins, including air filters, fuel filters, oil filter, starting motor and charging alternator etc.
Alternator	brushless AC alternator
Radiator	50°C, fan protective shroud
Base Frame	≤550KW: base mounted fuel tank, anti-vibration pads, battery holder
	>550KW: channel steel base frame, anti-vibration pads, battery holder
Circuit Breaker	≤1250A : Molded case circuit breaker(MCCB)
Control System	DEEP SEA 6020
Start Battery	Dry charged battery, available for 6 times starts under standard condition; connection cables.
Installation Accessories	Bellow, Elbow and flange, Exhaust silencer, etc.
Tool	standard
Documents	Electric drawing, operation & maintenance manual, certification etc.

III. OPTIONAL CONFIGURATION

Engine Accessories	◇Heavy-duty air filter ◇Coolant heater ◇Lub oil heater ◇Fuel and Water Separator
Alternator And Accessories	◇Stamford ◇Leroy Somer ◇Marathon ◇Anti condensation heater ◇PMG
	◇High voltage ____kV
Cooling System	◇50°C radiator ◇Heat exchanger + water cooling tower + External water circulation pumping system
	◇Remote horizontal water tank system
Control System	◇AMF ◇Parallel ◇Practical type in low temperature environment ◇Control Screen Heater
	◇Other (Comap、DEIF)
Circuit Breaker	◇3/4 poles ◇Fixed/handcart type ◇Electric mechanism
Automatic Transfer Swtich	◇ATS cabinet
Start Battery	◇Nickel-cadmium battery ◇Maintenance-free battery ◇Power charger and selector
	◇Charging current meter
External Fuel Tank	◇500L ◇1000L ◇1500L ◇2000L ◇2500L ◇3000L ◇4000L ◇5000L

IV. ENGINE DATA

Engine Model	6BTA5.9-G2	Engine Power	132	kW
Aspiration	Turbocharger& Aftercooled	Displacement	5.9	L
Type	In-line	Bore×Stroke	102×120	mm
No. of Cylinders	6	Compression Ratio	17.3:1	
Governor Type	Electronic Governor	Rated Speed	1800	RPM

■ Fuel System

Prime Power Fuel Consumption	31	L/h	Standby Power Fuel Consumption	34	L/h
Fuel #	ASTM D975 No.2-D or BS2869 1998 Class A1, A2		Injection System	BYC PB	

■ Lubrication System

Lub Oil Capacity	16.4	L			
Lub #	API CF-4 15W40		Max. Temperature	121	°C

■ Coolant System

Coolant Capacity	25.9	L	Max. Top Tank Temp.	104	°C
Std. Thermostat (Modulating) Range	82 - 95	°C	Fan Drive Method	Shaft drive	
Cooling Fan Air Flow	288	m ³ /min		3.6	
	kW				

■ Air Intake System

Combustion Air Flow	8.4/8.52	m ³ /min	Maximum Air Intake Restriction	3.7	kPa
---------------------	----------	---------------------	--------------------------------	-----	-----

■ Exhaust System

Exhaust Gas Flow	22.86/24.36	m ³ /min	Max. Back Pressure	10	kPa
Exhaust Gas Temp	≤580	°C	Exhaust Pipe Size	φ76	mm

DIESEL GENERATOR DATA SHEET

■ Starting System

Start Mode DC24V Electric start Battery 2×120 Ah

V. ALTERNATOR DATA

Alternator Model	SLG274D	Rate Power	110/138	kW/kVA
PF.	0.8	Voltage	440/254	V
Phase	3	Frequency	60	Hz
Connection	3P 4W/Y	Bearing	1	
Winding Pitch	2/3	Proteccion Class	IP21	
Insulation Class	H	Efficiency	90.8%	
Tel. Influence	TIF: < 50	Voltage Regulation	±1.0%	
Harmonic Coefficient	THF: < 2%	AVR	AS440	
Voltage Adjust Scope	≥±5%	Excitation System	Self Excited	

VI. CONTROL SYSTEM DATA MODEL DSE6020

■ Main feature

Electronic J1939 (CAN) and nonelectronic MPU and alternator sensing engine support for diesel, gas and petrol engines all in one variant. With a number of flexible inputs, outputs and protections, the modules can be easily adapted to suit a wide range of applications.



■ Key Function

- | | | |
|--|---|--|
| ▲Utility voltage sensing | ▲Configurable staged loading outputs | ▲Configurable remote start input |
| ▲Generator/load power monitoring (kW, kV A, kV Ar, pf) | ▲CAN, MPU and alternator speed sensing in one variant | ▲Alternative configuration |
| ▲Generator overload protection (kW) | ▲3 engine maintenance alarms | ▲Alarm including common alarm, common electric and common shutdown |
| ▲Efficient power save mode | ▲Engine speed protection | ▲LCD and LED alarm indication |
| ▲Mains and generator closed via front panel | ▲Engine pre-heat | ▲Configurable event log (50) |
| ▲4 configurable DC outputs | ▲Multiple date and time scheduler | ▲Heated display option available |
| ▲4 configurable analog./digital inputs | ▲Engine idle control for starting & stopping | ☆ <i>For more information, please visit the official website</i> |

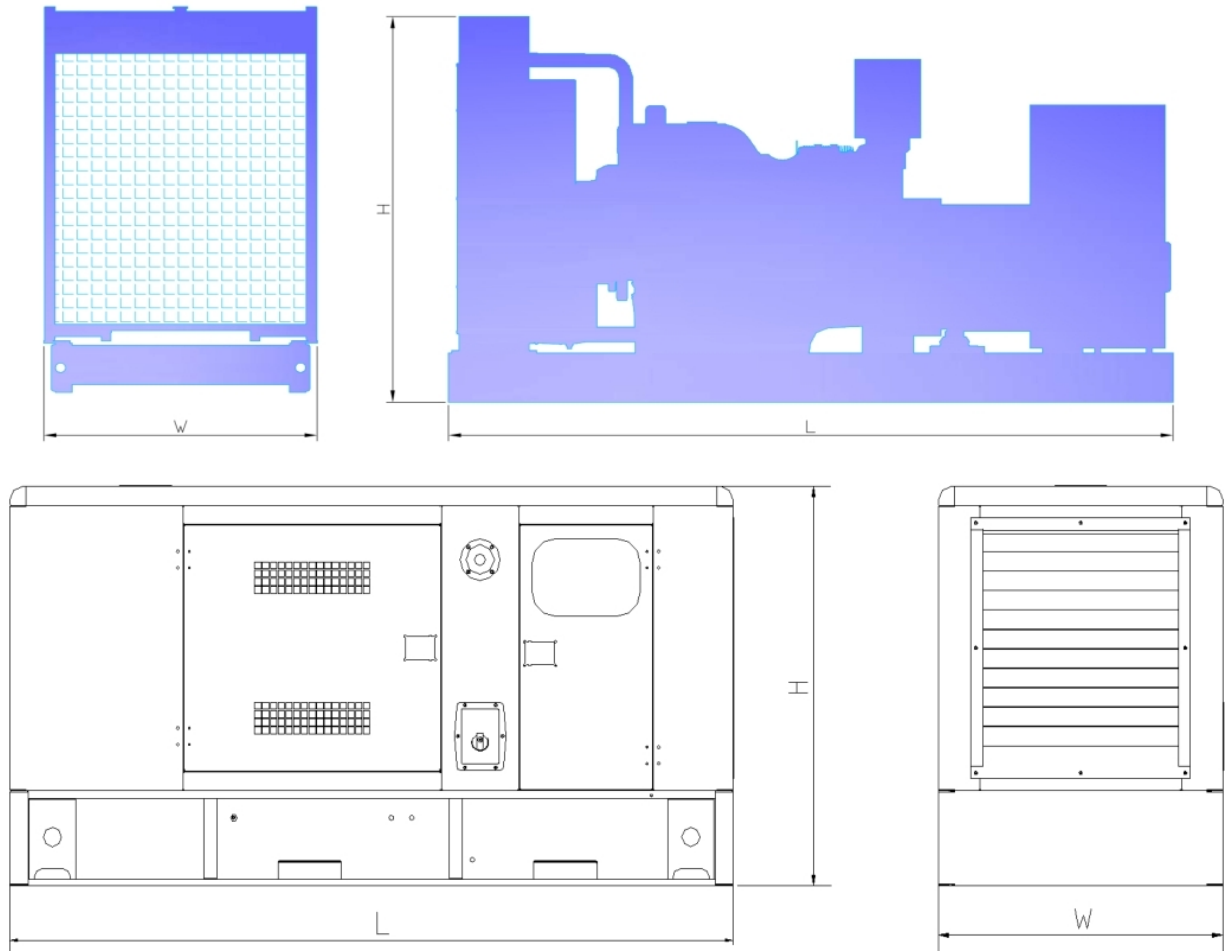
DIESEL GENERATOR DATA SHEET

- ▲ 6 configurable digital inputs
- ▲ Support for 0-10 V & 4-20 mA oil pressure sensors
- ▲ Fuel pump control
- ▲ Battery voltage monitoring
- ▲ Start on low battery voltage

VII. WARRANTY POLICY

1. Guarantee for one year or 1000 hours (accord to whichever reach first) from ex-factory date. Refer to 《 Diesel Generator Warranty Manual》 for more details.
2. Wearing parts(filters), incorrect man-made operation, maintenance failures are excluded from the warranty policy

VIII. DRAWING (for illustration purposes only)



Cumple con UL STD 2200 Certificado para
 CSA STD C22.2 # 100 Certificado para CSA
 STD C22.2 # 14

