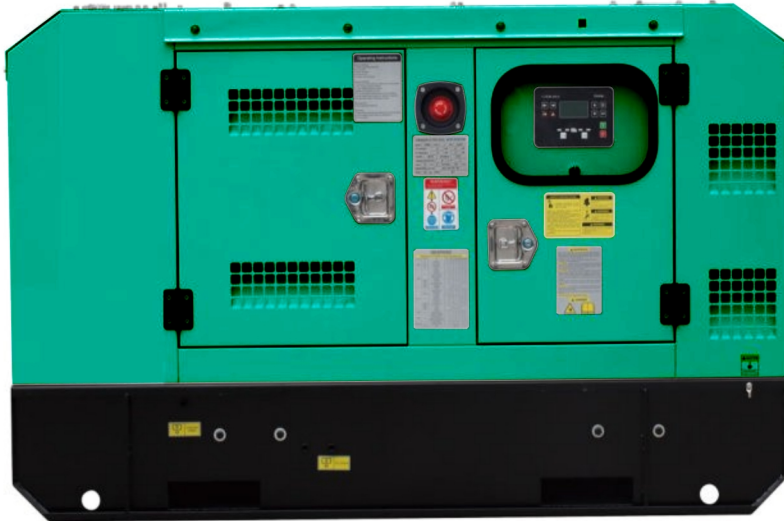


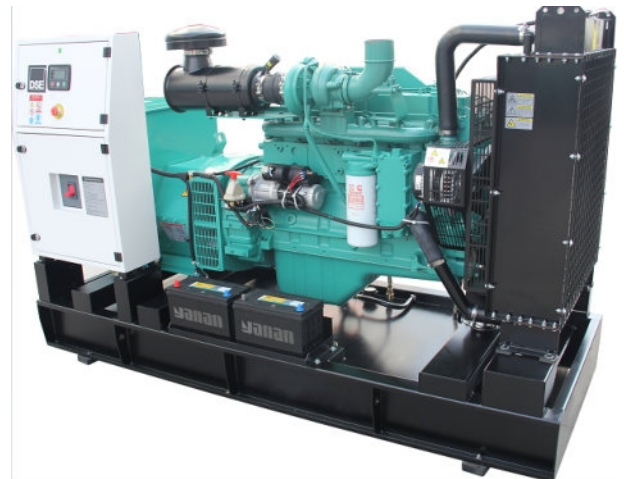
# DIESEL GENERATOR DATA SHEET

## HIPOWER DIESEL GENERATOR Powered by Cummins Model:PGD160C



### I . GENERAL DATA

Prime Power	kW/kVA	116	145
Standby Power	kW/kVA	128	160
Frequency	Hz/rpm	60	1800
Voltage	V	440	254
Current	A	190	
Connection	/	3P 4W/Y	
Rated Power Factor	/	0.8	
Open Type (LxWxH)	mm	2350x950x1500	
Open Type(Weight)	kg	1280	
Silent Type (LxWxH)	mm	2800x1100x1470	
Silent Type(Weight)	kg	1700	



■ Available for voltages 400/230V, 480/277V, 380/220V, 440/254V, 416/240V,220/127V, 208/120V

■ All datas based on ISO 3046, altitude 100m (328ft), barometric pressure 100kPa (29.53inHg), air temperature 25°C (77°F), relative humidity 30%.

■ Please contact with engineer for correct generator capacity selection when the load application can't meet with the standard reference.

■ diesel generators comply with standards :ISO8528,ISO 14000,ISO3046,GB755,BS5000,VDE0530,IEC34-1

## II. STANDARD CONFIGURATION

Engine	Cummins, including air filters, fuel filters, oil filter, starting motor and charging alternator etc.
Alternator	brushless AC alternator
Radiator	50°C, fan protective shroud
Base Frame	≤550KW: base mounted fuel tank, anti-vibration pads, battery holder >550KW: channel steel base frame, anti-vibration pads, battery holder
Circuit Breaker	≤1250A : Molded case circuit breaker(MCCB)
Control System	DEEP SEA 6020
Start Battery	Dry charged battery, available for 6 times starts under standard condition; connection cables.
Installation Accessories	Bellow, Elbow and flange, Exhaust silencer, etc.
Tool	standard
Documents	Electric drawing, operation & maintenance manual, certification etc.

## III. OPTIONAL CONFIGURATION

Engine Accessories	◇ Heavy-duty air filter   ◇ Coolant heater   ◇ Lub oil heater   ◇ Fuel and Water Separator
Alternator And Accessories	◇ Stamford   ◇ Leroy Somer   ◇ Marathon   ◇ Anti condensation heater   ◇ PMG ◇ High voltage _____ kV
Cooling System	◇ 50°C radiator   ◇ Heat exchanger + water cooling tower + External water circulation pumping system ◇ Remote horizontal water tank system
Control System	◇ AMF   ◇ Parallel   ◇ Practical type in low temperature environment   ◇ Control Screen Heater ◇ Other (Comap、DEIF)
Circuit Breaker	◇ 3/4 poles   ◇ Fixed/handcart type   ◇ Electric mechanism
Automatic Transfer Switch	◇ ATS cabinet
Start Battery	◇ Nickel-cadmium battery   ◇ Maintenance-free battery   ◇ Power charger and selector ◇ Charging current meter
External Fuel Tank	◇ 500L   ◇ 1000L   ◇ 1500L   ◇ 2000L   ◇ 2500L   ◇ 3000L   ◇ 4000L   ◇ 5000L
Others	_____

## IV. ENGINE DATA

Engine Model	6BTAA5.9-G2	Engine Power	145	kW
Aspiration	Turbocharged and Air to air afterCooled	Displacement	5.9	L
Type	In-line	Bore×Stroke	102×120	mm
No. of Cylinders	6	Compression Ratio	17.3:1	
Governor Type	Electronic Governor	Rated Speed	1800	RPM

### ■ Fuel System

Prime Power Fuel Consumption	34	L/h	Standby Power Fuel Consumption	38	L/h
Fuel #	ASTM D975 No.2-D or BS2869 1998 Class A1, A2		Injection System	BYC PB	

### ■ Lubrication System

Lub Oil Capacity	16.4	L			
Lub #	API CF-4 15W40		Max.Temperature	121	°C

### ■ Coolant System

Coolant Capacity	26.4	L	Max. Top Tank Temp.	104	
Std. Thermostat (Modulating) Range	°C 82 - 95	°C	Fan Drive Method	Shaft drive	
Cooling Fan Air Flow	288	m3/min			

### ■ Air Intake System

Combustion Air Flow	8.1/8.52	m3/min	Maximum Air Intake Restriction	3.7	kPa
---------------------	----------	--------	--------------------------------	-----	-----

### ■ Exhaust System

Exhaust Gas Flow	22.14/24.06	m3/min	Max.Back Pressure	10	kPa
Exhaust Gas Temp	≤570	°C	Exhaust Pipe Size	φ76	mm

### ■ Starting System

# DIESEL GENERATOR DATA SHEET

Start Mode DC24V Electric start Battery 2x120 Ah

## V. ALTERNATOR DATA

Alternator Model	SLG274E	Rate Power	134/168	kW/kVA
PF.	0.8	Voltage	440/254	V
Phase	3	Frequency	60	Hz
Connection	3P 4W/Y	Bearing	1	
Winding Pitch	2/3	Proteccion Class	IP21	
Insulation Class	H	Efficiency	92.5%	
Tel. Influence	TIF: <50	Voltage Regulation	±1.0%	
Harmonic Coefficient	THF: <2%	AVR	AS440	
Voltage Adjust Scope	≥±5%	Excitation System	Self Excited	

## VI. CONTROL SYSTEM DATA

MODEL DSE6020

### ■ Main feature

Electronic J1939 (CAN) and nonelectronic MPU and alternator sensing engine support for diesel, gas and petrol engines all in one variant. With a number of flexible inputs, outputs and protections, the modules can be easily adapted to suit a wide range of applications.



### ■ Key Function

- ▲ Utility voltage sensing
- ▲ Generator/load power monitoring (kW, kV A, kV Ar, pf)
- ▲ Generator overload protection (kW)
- ▲ Efficient power save mode
- ▲ Mains and generator closed via front panel
- ▲ 4 configurable DC outputs
- ▲ 4 configurable analog./digital inputs
- ▲ 6 configurable digital inputs
- ▲ Support for 0-10 V & 4-20 mA oil
- ▲ Configurable staged loading outputs
- ▲ CAN, MPU and alternator speed sensing in one variant
- ▲ 3 engine maintenance alarms
- ▲ Engine speed protection
- ▲ Engine pre-heat
- ▲ Multiple date and time scheduler
- ▲ Engine idle control for starting & stopping
- ▲ Fuel pump control
- ▲ Battery voltage monitoring
- ▲ Configurable remote start input
- ▲ Alternative configuration
- ▲ Alarm including common alarm, common electric and common shutdown
- ▲ LCD and LED alarm indication
- ▲ Configurable event log (50)
- ▲ Heated display option available

☆ *For more information, please visit the official website*

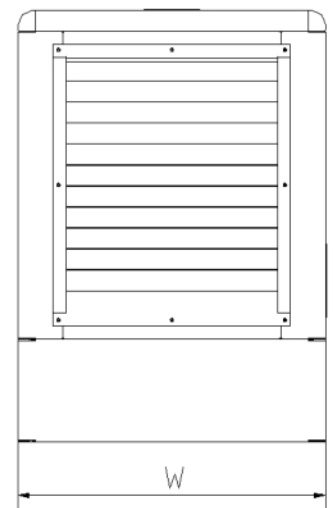
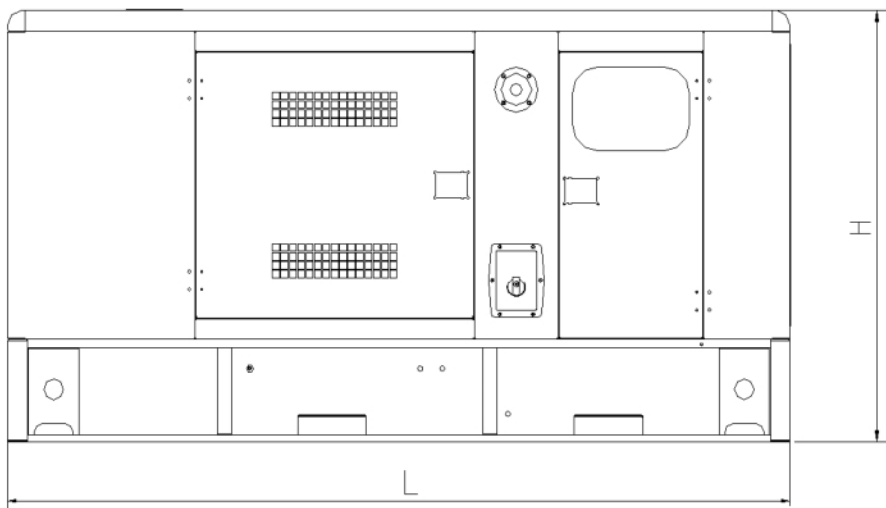
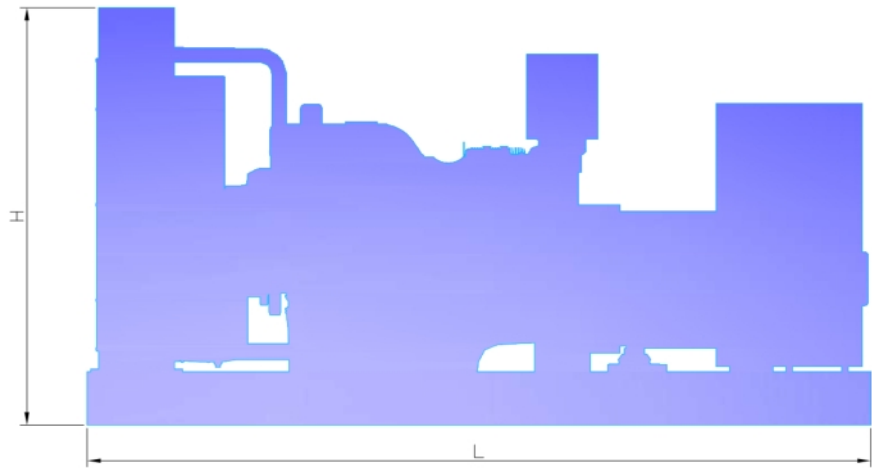
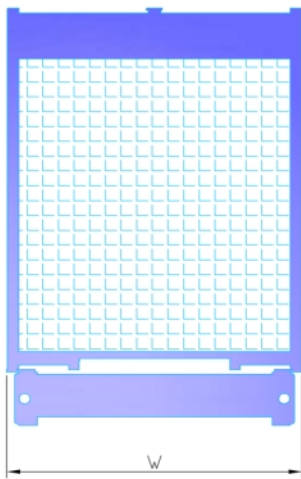
pressure sensors

▲Start on low battery voltage

## VII. WARRANTY POLICY

1. Guarantee for one year or 1000 hours (accord to whichever reach first) from ex-factory date. Refer to 《 Diesel Generator Warranty Manual》 for more details.
2. Wearing parts( filters), incorrect man-made operation, maintenance failures are excluded from the warranty policy

## VIII. DRAWING (for illustration purposes only)



Cumple con UL STD 2200 Certificado para  
CSA STD C22.2 # 100 Certificado para CSA  
STD C22.2 # 14

