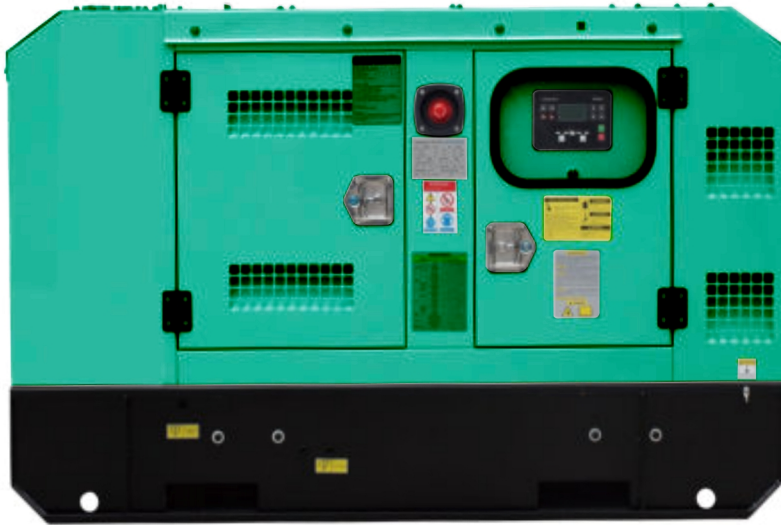


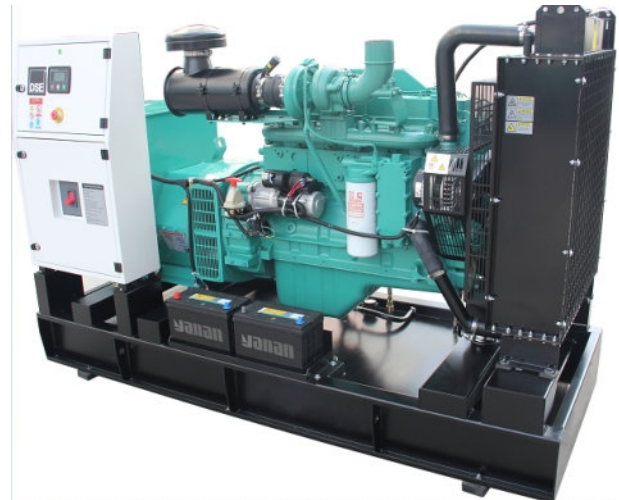
DIESEL GENERATOR DATA SHEET

HIPOWER DIESEL GENERATOR Powered by Cummins Model:PGD313C



I . GENERAL DATA

Prime Power	kW/kVA	224	280
Standby Power	kW/kVA	250	313
Frequency	Hz/rpm	60	1800
Voltage	V	208	120
Current	A	866	
Connection	/	3P 4W/Y	
Rated Power Factor	/	0.8	
Open Type (LxWxH)	mm	2600x1050x1820	
Open Type(Weight)	kg	2000	
Silent Type (LxWxH)	mm	3800x1300x1850	
Silent Type(Weight)	kg	2800	



■ Available for voltages 400/230V, 480/277V, 380/220V, 440/254V, 416/240V, 220/127V, 208/120V

■ All datas based on ISO 3046, altitude 100m (328ft), barometric pressure 100kPa (29.53inHg), air temperature 25°C (77°F), relative humidity 30%.

■ Please contact with engineer for correct generator capacity selection when the load application can't meet with the standard reference

DIESEL GENERATOR DATA SHEET

■ diesel generators comply with standards :ISO8528,ISO 14000,ISO3046,GB755,BS5000,VDE0530,IEC34-1

Engine	Cummins, including air filters, fuel filters, oil filter, starting motor and charging alternator etc.
Alternator	brushless AC alternator
Radiator	50°C, fan protective shroud
Base Frame	≤550KW: base mounted fuel tank, anti-vibration pads, battery holder >550KW: channel steel base frame, anti-vibration pads, battery holder
Circuit Breaker	≤1250A : Molded case circuit breaker(MCCB)
Control System	DEEP SEA 6120 MKIII
Start Battery	Dry charged battery, available for 6 times starts under standard condition; connection cables.
Installation Accessories	Bellow, Elbow and flange, Exhaust silencer, etc.
Tool	standard
Documents	Electric drawing, operation & maintenance manual, certification etc.

III. OPTIONAL CONFIGURATION

Engine Accessories	◇ Heavy-duty air filter ◇ Coolant heater ◇ Lub oil heater ◇ Fuel and Water Separator
Alternator And Accessories	◇ Stamford ◇ Leroy Somer ◇ Marathon ◇ Anti condensation heater ◇ PMG ◇ High voltage _____kV
Cooling System	◇ 50°C radiator ◇ Heat exchanger + water cooling tower + External water circulation pumping system ◇ Remote horizontal water tank system
Control System	◇ AMF ◇ Parallel ◇ Practical type in low temperature environment ◇ Control Screen Heater ◇ Other (Comap、DEIF)
Circuit Breaker	◇ 3/4 poles ◇ Fixed/handcart type ◇ Electric mechanism
Automatic Transfer Swtich	◇ ATS cabinet
Start Battery	◇ Nickel-cadmium battery ◇ Maintenance-free battery ◇ Power charger and selector ◇ Charging current meter

DIESEL GENERATOR DATA SHEET

External Fuel Tank ◇ 500L ◇ 1000L ◇ 1500L ◇ 2000L ◇ 2500L ◇ 3000L ◇ 4000L ◇ 5000L

Others _____

IV. ENGINE DATA

Engine Model	6LTAA8.9-G3	Engine Power	255	kW
Aspiration	Turbocharged and Charge Air cooled	Displacement	8.9	L
Type	In-line	Bore×Stroke	114×145	mm
No. of Cylinders	6	Compression Ratio	16.6:1	
Governor Type	Electronic Governor	Rated Speed	1800	RPM

■ Fuel System

Prime Power Fuel Consumption	62	L/h	Standby Power Fuel Consumption	70	L/h
Fuel #	ASTM D975 No.2-D or BS2869 1998 Class A1, A2		Injection System	BYC P7100	

■ Lubrication System

Lub Oil Capacity	27.6	L			
Lub #	API CF-4 15W40		Max. Temperature	121	°C

■ Coolant System

Coolant Capacity	34	L	Max. Top Tank Temp.	110	°C
Std. Thermostat (Modulating) Range	82 - 95	°C	Fan Drive Method	Shaft drive	
Cooling Fan Air Flow	552	m3/min			

■ Air Intake System

Combustion Air Flow	16.8/17.16	m3/min	Maximum Air Intake Restriction	3.7	kPa
---------------------	------------	--------	--------------------------------	-----	-----

DIESEL GENERATOR DATA SHEET

■ Exhaust System

Exhaust Gas Flow	43.56/45.72	m3/min	Max.Back Pressure	10	kPa
Exhaust Gas Temp	≤520	°C	Exhaust Pipe Size	φ102	mm

■ Starting System

Start Mode	DC24V Electric start	Battery	2×150	Ah
------------	----------------------	---------	-------	----

V. ALTERNATOR DATA

Alternator Model	SLG274K	Rate Power	239.2/299	kW/kVA
PF.	0.8	Voltage	440/254	V
Phase	3	Frequency	60	Hz
Connection	3P 4W/Y	Bearing	1	
Winding Pitch	2/3	Proteccion Class	IP21	
Insulation Class	H	Efficiency	92.8%	
Tel. Influence	TIF: <50	Voltage Regulation	±1.0%	
Harmonic Coefficient	THF: <2%	AVR	AS440	
Voltage Adjust Scope	≥±5%	Excitation System	Self Excited	

VI. CONTROL SYSTEM DATA

MODEL DSE6120

■ Main feature

The DSE6110 MKII Auto Start Control Module and the DSE6120 MKII Auto Mains (Utility) Failure Control Module are suitable for a wide variety of single gen-set applications.

Monitoring an extensive number of engine parameters, the modules will display warnings, shutdown and engine status information on the back-lit LCD screen, illuminated LEDs and remote PC

The DSE6120 MKIII will also monitor the mains (utility) supply. The modules include USB connection and dedicated DSENet® terminals for system expansion.



- ▲ 4-line back-lit LCD text display
- ▲ Breaker control via fascia buttons
- ▲ Automatically transfers between mains (utility) and generator (DSE6120 MKIII only) for
- ▲ Multiple display languages
- ▲ Fuel and start outputs configurable

DIESEL GENERATOR DATA SHEET

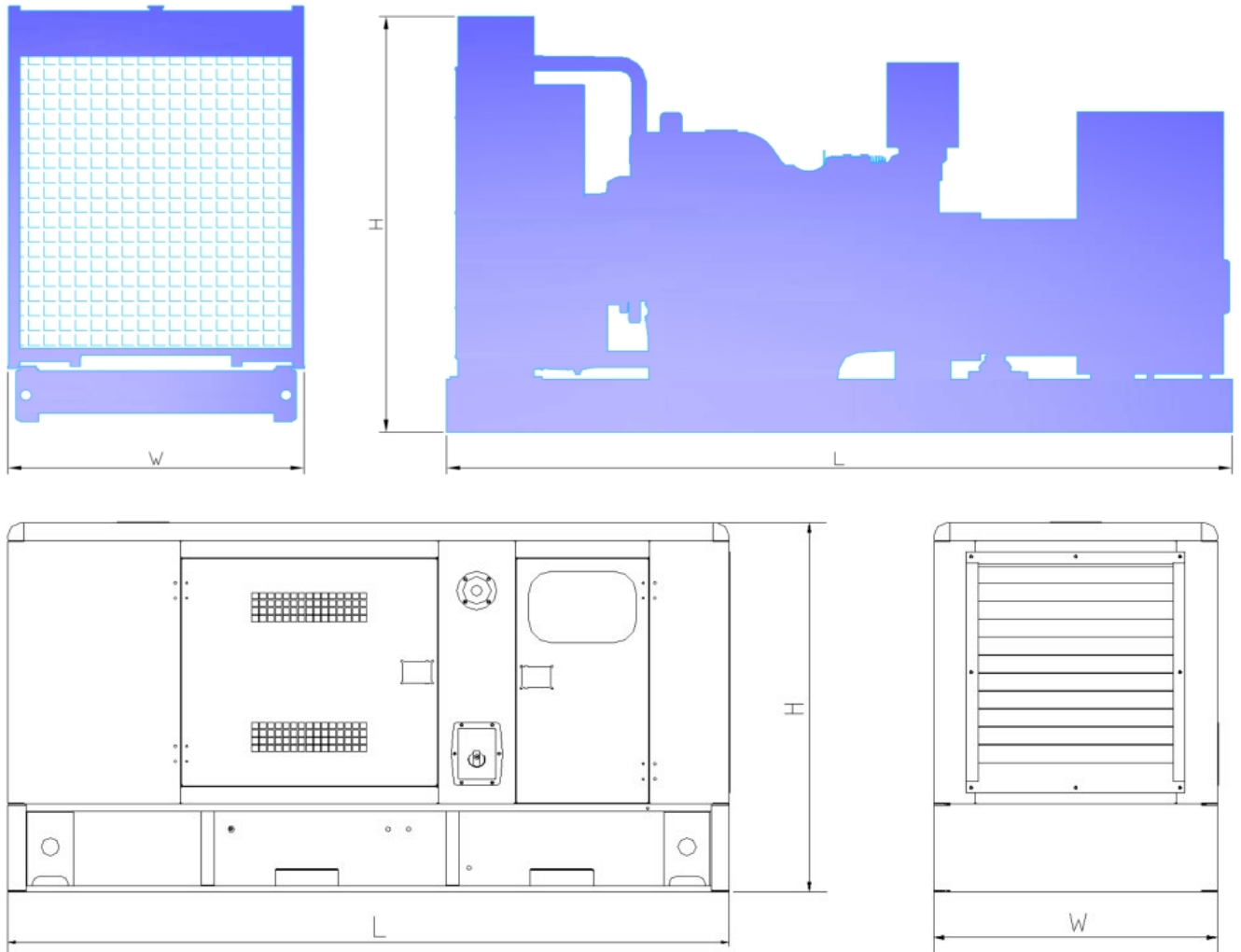
- | | | |
|---|---|---|
| <ul style="list-style-type: none"> ▲ Five-key menu navigation ▲ LCD alarm indication ▲ Customisable power-up text and screen images. ▲ DSENet® expansion compatibility ▲ Data logging facility ▲ Internal PLC editor ▲ Protections disable feature ▲ Fully configurable via PC using USB communications ▲ Front panel configuration with PIN protection ▲ Power save mode ▲ 3-phase generator sensing and protection ▲ 3-phase mains (utility) sensing and protection (DSE6120 MKIII only) ▲ Automatic load transfer control (DSE6120 MKIII only) ▲ Generator current and power monitoring (kW, kvar, kVA, pf) ▲ Mains (utility) current and power monitoring (kW, kvar, kVA, pf) (DSE6120 MKIII only) ▲ kW overload alarm ▲ Over current protection | <ul style="list-style-type: none"> when using CAN ▲ 6 configurable DC outputs ▲ 4 configurable analogue/digital input for monitoring and maintenance periods ▲ Support for 0 V to 10 V & 4 mA to 20 mA sensors ▲ 8 configurable digital inputs ▲ CAN, MPU and alternator frequency displayed simultaneously for full visibility ▲ Real time clock ▲ Manual and automatic fuel pump control ▲ Engine pre-heat and post-heat function to meet user specific application requirements. ▲ Engine run-time scheduler ▲ Engine idle control for starting & stopping ▲ Fuel level alarms ▲ 3 configurable maintenance alarms ▲ Compatible with a wide range of CAN engines, including Tier 4 engine support ▲ Uses DSE Configuration Suite PC Software for simplified configuration ▲ Licence-free PC software ▲ IP65 rating (with optional gasket) offers increased resistance to water ingress ▲ Configurable CAN read & transmitted information. ▲ 1 alternative configuration | <ul style="list-style-type: none"> convenience ▲ Hours counter provides accurate information ▲ User-friendly set-up and button layout for ease of use ▲ Multiple parameters are monitored & frequency displayed simultaneously for full visibility ▲ The module can be configured to suit a wide range of applications for user flexibility ▲ PLC editor allows user configurable functions |
|---|---|---|

VII. WARRANTY POLICY

1. Guarantee for three years or 2000 hours (accord to whichever reach first) from ex-factory date. Refer to « Diesel Generator Warranty Manual» for more details.
2. Wearing parts (filters), incorrect man-made operation, maintenance failures are excluded from the warranty policy

DIESEL GENERATOR DATA SHEET

VIII. DRAWING (for illustration purposes only)



Cumple con UL STD 2200 Certificado para
CSA STD C22.2 # 100 Certificado para CSA
STD C22.2 # 14

